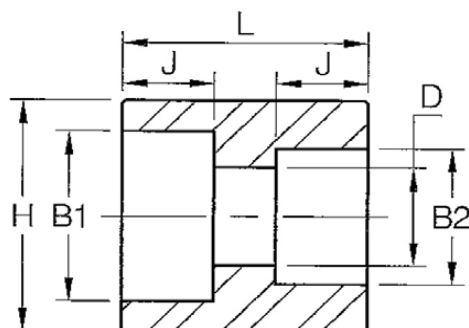
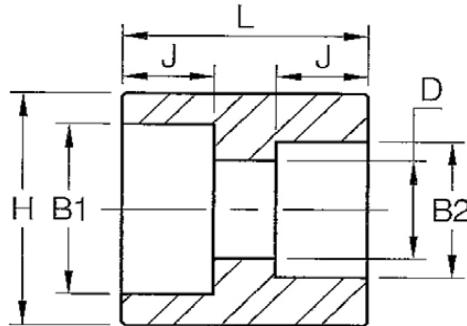


Reducing Coupling Socket Weld



Nom. Pipe Size	H		B1	B2	D		J		L	
	3M	6M			3M	6M	3M	6M	3M	6M
1/4"x1/8"	22.2	23.8	14.3	10.9	6.9	4.0	10.5	10.5	27.5	27.5
3/8"x1/8"	26.1	28.1	17.7	10.9	6.9	4.0	10.5	10.5	28.5	28.5
3/8"x1/4"	26.1	28.1	17.7	14.3	9.3	6.4	10.5	10.5	28.5	28.5
1/2"x1/8"	31.6	34.2	21.9	10.9	6.9	4.0	12.5	12.5	34.5	34.5
1/2"x1/4"	31.6	34.2	21.9	13.3	9.3	6.4	12.5	12.5	34.5	34.5
1/2"x3/8"	31.6	34.2	21.9	17.7	12.6	9.2	12.5	12.5	34.5	34.5
3/4"x1/8"	37.4	41.6	27.3	10.9	6.9	4.0	14.0	14.0	37.5	37.5
3/4"x1/4"	37.4	41.6	27.3	14.3	9.3	6.4	14.0	14.0	37.5	37.5
3/4"x3/8"	37.4	41.6	27.3	17.7	12.6	9.2	14.0	14.0	37.5	37.5
3/4"x1/2"	37.4	41.6	27.3	21.9	15.8	11.8	14.0	14.0	37.5	37.5
1"x1/8"	45.7	50.2	34.0	10.9	6.9	4.0	15.0	15.0	43.0	43.0
1x1/4"	45.7	50.2	34.0	14.3	9.3	6.4	15.0	15.0	43.0	43.0
1"x3/8"	45.7	50.2	34.0	17.7	12.6	9.2	15.0	15.0	43.0	43.0
1"x1/2"	45.7	50.2	34.0	21.9	15.8	11.8	15.0	15.0	43.0	43.0
1"x3/4"	45.7	50.2	34.0	27.3	21.0	15.6	15.0	15.0	43.0	43.0
1-1/4"x1/8"	55.3	59.0	42.8	10.9	6.9	4.0	17.0	17.0	47.0	47.0
1-1/4"x1/4"	55.3	59.0	42.8	14.3	9.3	6.4	17.0	17.0	47.0	47.0
1-1/4"x3/8"	55.3	59.0	42.8	17.7	12.6	9.2	17.0	17.0	47.0	47.0
1-1/4"x1/2"	55.3	59.0	42.8	21.9	15.8	11.8	17.0	17.0	47.0	47.0
1-1/4"x3/4"	55.3	59.0	42.8	27.3	21.0	15.6	17.0	17.0	47.0	47.0
1-1/4"x1"	55.3	59.0	42.8	34.0	26.7	20.7	17.0	17.0	47.0	47.0
1-1/2"x1/8"	62.5	67.1	48.9	10.9	6.9	4.0	17.5	17.5	48.0	48.0
1-1/2"x1/4"	62.5	67.1	48.9	14.3	9.3	6.4	17.5	17.5	48.0	48.0
1-1/2"x3/8"	62.5	67.1	48.9	17.7	12.6	9.2	17.5	17.5	48.0	48.0
1-1/2"x1/2"	62.5	67.1	48.9	21.9	15.8	11.8	17.5	17.5	48.0	48.0
1-1/2"x3/4"	62.5	67.1	48.9	27.3	21.0	15.6	17.5	17.5	48.0	48.0
1-1/2"x1"	62.5	67.1	48.9	34.0	26.7	20.7	17.5	17.5	48.0	48.0
1-1/2"x1-1/4"	62.5	67.1	48.9	42.8	35.1	29.5	17.5	17.5	48.0	48.0
2"x1/8"	75.6	83.6	61.4	10.9	6.9	4.0	22.0	22.0	63.0	63.0
2"x1/4"	75.6	83.6	61.4	14.3	9.3	6.4	22.0	22.0	63.0	63.0
2"x3/8"	75.6	83.6	61.4	17.7	12.6	9.2	22.0	22.0	63.0	63.0
2"x1/2"	75.6	83.6	61.4	21.9	15.8	11.8	22.0	22.0	63.0	63.0
2"x3/4"	75.6	83.6	61.4	27.3	21.0	15.6	22.0	22.0	63.0	63.0
2"x1"	75.6	83.6	61.4	34.0	26.7	20.7	22.0	22.0	63.0	63.0
2"x1-1/4"	75.6	83.6	61.4	42.8	35.1	29.5	22.0	22.0	63.0	63.0

Reducing Coupling Socket Weld



Nom. Pipe Size	H		B1	B2	D		J		L	
	3M	6M			3M	6M	3M	6M	3M	6M
2"x1-1/2"	75.6	83.6	61.4	48.9	40.9	34.0	22.0	22.0	63.0	63.0
2-1/2"x1/8"	92.0	108.5	74.1	10.9	6.9	4.0	22.0	22.4	63.0	63.5
2-1/2"x1/4"	92.0	108.5	74.1	14.3	9.3	6.4	22.0	22.4	63.0	63.5
2-1/2"x3/8"	92.0	108.5	74.1	17.7	12.6	9.2	22.0	22.4	63.0	63.5
2-1/2"x1/2"	92.0	108.5	74.1	21.9	15.8	11.8	22.0	22.4	63.0	63.5
2-1/2"x3/4"	92.0	108.5	74.1	27.3	21.0	15.6	22.0	22.4	63.0	63.5
2-1/2"x1"	92.0	108.5	74.1	34.0	26.7	20.7	22.0	22.4	63.0	63.5
2-1/2"x1-1/4"	92.0	108.5	74.1	42.8	35.1	29.5	22.0	22.4	63.0	63.5
2-1/2"x1-1/2"	92.0	108.5	74.1	48.9	40.9	34.0	22.0	22.4	63.0	63.5
2-1/2"x2"	92.0	108.5	74.1	61.4	52.5	42.9	22.0	22.4	63.0	63.5
3"x1/8"	109.4	127.6	90.0	10.9	6.9	4.0	22.0	25.5	63.0	70.0
3"x1/4"	109.4	127.6	90.0	14.3	9.3	6.4	22.0	25.5	63.0	70.0
3"x3/8"	109.4	127.6	90.0	17.7	12.6	9.2	22.0	25.5	63.0	70.0
3"x1/2"	109.4	127.6	90.0	21.9	15.8	11.8	22.0	25.5	63.0	70.0
3"x3/4"	109.4	127.6	90.0	27.3	21.0	15.6	22.0	25.5	63.0	70.0
3"x1"	109.4	127.6	90.0	34.0	26.7	20.7	22.0	25.5	63.0	70.0
3"x1-1/4"	109.4	127.6	90.0	42.8	35.1	29.5	22.0	25.5	63.0	70.0
3"x1-1/2"	109.4	127.6	90.0	48.9	40.9	34.0	22.0	25.5	63.0	70.0
3"x2"	109.4	127.6	90.0	61.4	52.5	42.9	22.0	25.5	63.0	70.0
3"x2-1/2"	109.4	127.6	90.0	74.1	62.7	53.8	22.0	25.5	63.0	70.0
4"x1/8"	137.1	159.0	115.4	10.9	6.9	4.0	22.0	28.4	63.0	76.2
4"x1/4"	137.1	159.0	115.4	14.3	9.3	6.4	22.0	28.4	63.0	76.2
4"x3/8"	137.1	159.0	115.4	17.7	12.6	9.2	22.0	28.4	63.0	76.2
4"x1/2"	137.1	159.0	115.4	21.9	15.8	11.8	22.0	28.4	63.0	76.2
4"x3/4"	137.1	159.0	115.4	27.3	21.0	15.6	22.0	28.4	63.0	76.2
4"x1"	137.1	159.0	115.4	34.0	26.7	20.7	22.0	28.4	63.0	76.2
4"x1-1/4"	137.1	159.0	115.4	42.8	35.1	29.5	22.0	28.4	63.0	76.2
4"x1-1/2"	137.1	159.0	115.4	48.9	40.9	34.0	22.0	28.4	63.0	76.2
4"x2"	137.1	159.0	115.4	61.4	52.5	42.9	22.0	28.4	63.0	76.2
4"x2-1/2"	137.1	159.0	115.4	74.1	62.7	53.8	22.0	28.4	63.0	76.2
4"x3"	137.1	159.0	115.4	90.0	78.0	66.5	22.0	28.4	63.0	76.2

- (1) 3M and 6M denote 3000Lb and 6000Lb.
- (2) Dimensions in accordance with ASME B16.11-2011.